

# KIA / HYUNDAI ESL

S.O.S Car Simulator instruction manual

## ESL/ELV REPLACEMENT PROGRAM

Page	Content	MIN. VERSION	PHOTO	PINOUT	VIDEO
Page 2	• Program introduction				
Page 3	• <b>KIA / HYUNDAI Old Type</b>	001			
Page 4/5	• <b>KIA / HYUNDAI New Type</b>	120			





## ● Program introduction



### Example cars

#### ESL

I30  
IX35  
Kona  
Rio  
Sorento

#### ESL

Sportage  
Picanto  
Tucson  
Xceed  
Ceed

#### ESL

Cerato  
Elentra  
I10  
I20  
Forte

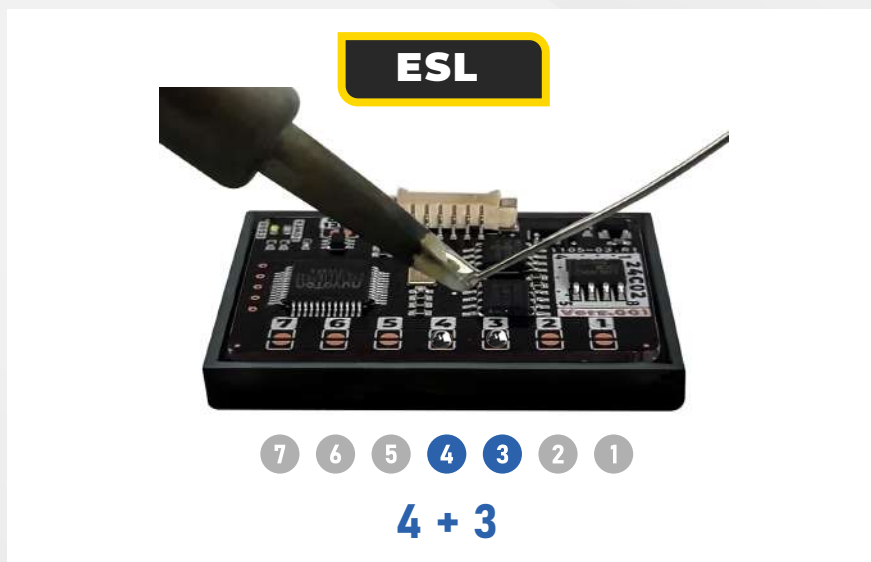
#### ESL

Optima  
Optima  
Cadenza

## ● KIA / HYUNDAI Old Type

### ●●● Jumpers to solder

Choose the S.O.S program by soldering the following jumpers depending on your car brand:



To select the program you need to solder the jumpers on the front of the Emulator:

#### Attention!

Always pul the Emulator back into the plastic cover before attaching it to the ECU board.

Attaching the Emulator to the ECU board without the plastic cover may result! in damaging the ECU or the Emulator!

## ● KIA / HYUNDAI Old Type



### Program Usage

The Emulator can be used with Kia / Hyundai Old Type vehicles equipped with a 6-pin SCL plug



### Example cars

#### KIA / HYUNDAI Old Type

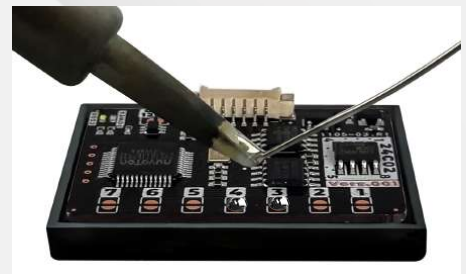
I30	Sportage	Cerato	Optima
IX35	Picanto	Elentra	Optima
Kona	Tucson	I10	Cadenza
Rio	Xceed	I20	
Sorento	Ceed	Forte	



## ●●● Jumpers to solder

1

Select the S.O.S program by soldering the jumpers on the right: **4 + 3**



7 6 5 4 3 2 1  
**4 + 3**

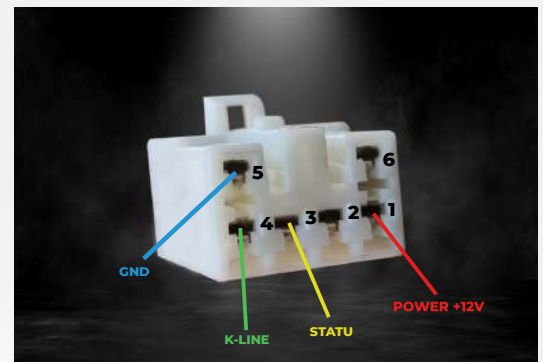
2

Connect the Emulator to the SCL plug according to the pictures on the right.

GND	Pin 5
K-LINE	Pin 4
STATU	Pin 3
POWER +12V	Pin 1

3

The original ESL needs to be removed from the car.



## ● Program introduction



### Example cars

#### ESL

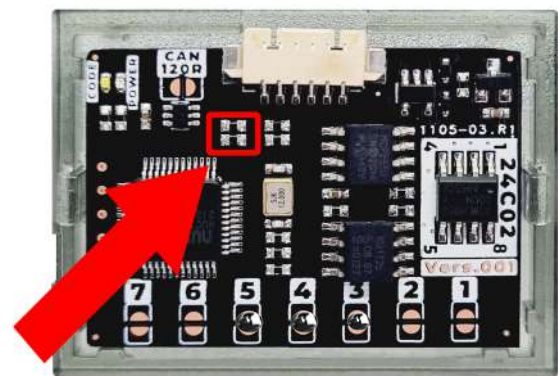
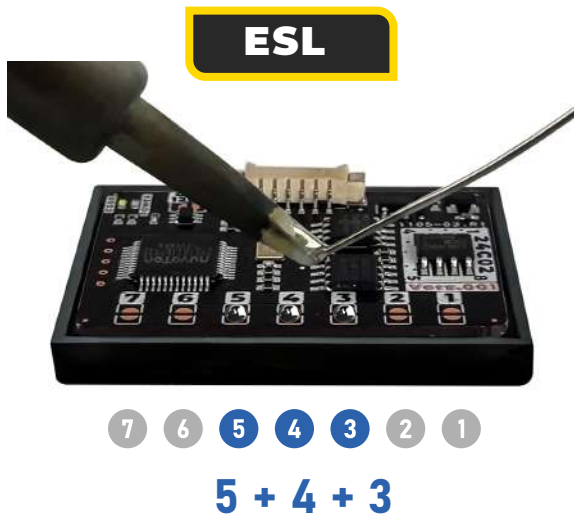
Hyundai Tucson  
Hyundai Sonata  
Hyundai Staria  
Kia Sorento  
Kia Sportage  
Kia Karnaval



## ● KIA / HYUNDAI New Type

●●● Jumpers to solder

Choose the S.O.S program by soldering the following jumpers depending on your car brand:



**Please remove these two resistors when using the emulator on Hyundai new type steering lock.**

To select the program you need to solder the jumpers on the front of the Emulator:

#### Attention!

Always pul the Emulator back into the plastic cover before attaching it to the ECU board.

Attaching the Emulator to the ECU board without the plastic cover may result! in damaging the ECU or the Emulator!

# ESL

## ● KIA / HYUNDAI New Type



### Program Usage

The Emulator can be used with Kia / Hyundai New Type vehicles equipped with a 6-pin SCL plug



### Example cars

#### KIA / HYUNDAI New Type

Hyundai Tucson  
Hyundai Sonata  
Hyundai Staria

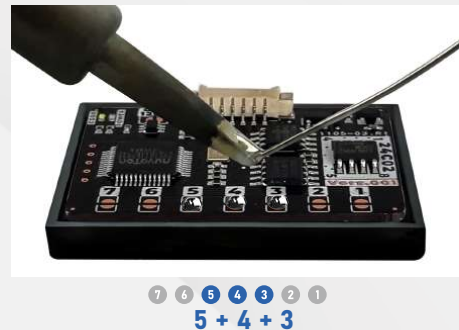
Kia Sorento  
Kia Sportage  
Kia Karnaval



## ●●● Jumpers to solder

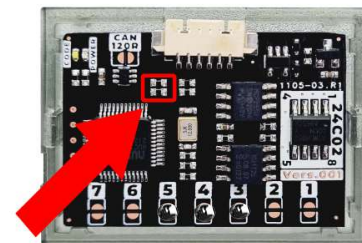
1

Select the S.O.S program by soldering the jumpers on the right:  
**5 + 4 + 3**



2

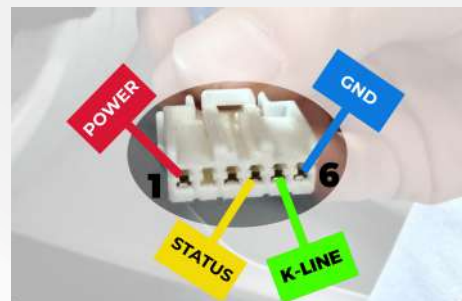
Please remove these two resistors when using the emulator on Hyundai / Kia for New Type Steering lock.



Please remove these two resistors when using the emulator on Hyundai new type steering lock.

3

Connect the Emulator to the SCL plug according to the pictures on the right.



GND	Pin 6
K-LINE	Pin 5
STATU	Pin 4
POWER +12V	Pin 1

4

The original ESL needs to be removed from the car.